

PROPOSED EXPLORATIONS AND LEGEND

- TB-100** Proposed Soil Boring and Designation
- TB-103** Proposed Sonic Core Boring and Designation
- Proposed Boring Work Zone
- ALT.** Alternative Proposed Boring
- Proposed Shear Wave Velocity Testing
- Proposed Depth of Boring
- 100' OW (1) VWP (1)** Proposed Observation Well and Quantity
- 120' OW (1) VWP (2)** Proposed Vibrating Wire Piezometer and Quantity

DRAFT

NOTES

1. Base map is adapted from City of Seattle GIS data files *topo_all.dwg*, *st_names.dwg*, and *paveedge.dwg*, received 3-11-02; City of Seattle GIS data file *buildings.dwg*, received 3-6-02; and Parsons Brinckerhoff AutoCAD files *BSMP_SO.dwg*, received 11-30-01, and *rail.dwg*, received 5-15-03.
2. Bored tunnel, bus tunnel, and BNSF tunnel are based on file *SINGLE BORE W SOIL 121608 - PLN.dgn*, received 1-15-09 from Parsons Brinckerhoff.
3. Existing footings are based on Parsons Brinckerhoff files *160073U00ALLUEF000.dwg*, received 6-11-07; *GIS_EX_VIADUCT.dgn*, received 4-9-08; and *160073CSBS00SD200.MST*, received 5-27-08.

Alaskan Way Viaduct and Seawall Program
Bored Tunnel Project
Seattle, Washington

PROPOSED EXPLORATION PLAN

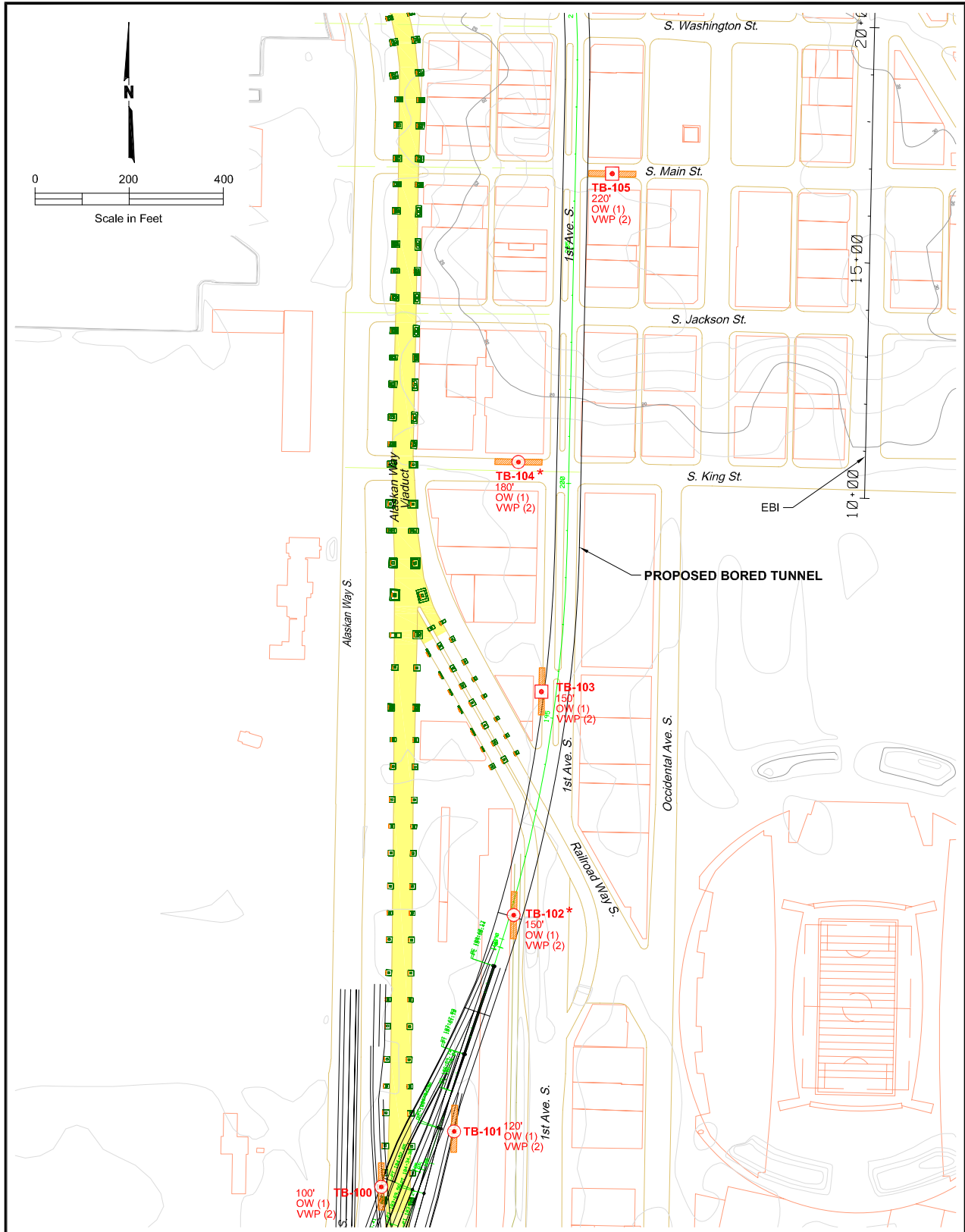
February 2009

21-1-20840-010

SHANNON & WILSON, INC.
Geotechnical and Environmental Consultants

FIG. 1
Sheet 1 of 6

FIG. 1
Sheet 1 of 6



PROJECT EXPLORATIONS AND LEGEND

- TB-100** (red circle with dot) Proposed Soil Boring and Designation
- TB-103** (red square with dot) Proposed Sonic Core Boring and Designation
- (red dashed line) Proposed Boring Work Zone
- ALT.** Alternative Proposed Boring
- *** Proposed Shear Wave Velocity Testing
- (red circle with dot) Proposed Depth of Boring
- (red circle with dot) Proposed Observation Well and Quantity
- (red circle with dot) Proposed Vibrating Wire Piezometer and Quantity

NOTES

1. Base map is adapted from City of Seattle GIS data files *topo_all.dwg*, *st_names.dwg*, and *pavedge.dwg*, received 3-11-02; City of Seattle GIS data file *buildings.dwg*, received 3-6-02; and Parsons Brinckerhoff AutoCAD files *BSMP_SO.dwg*, received 11-30-01, and *rail.dwg*, received 5-15-03.
2. Bored tunnel, bus tunnel, and BNSF tunnel are based on file *SINGLE BORE W SOIL 121608 - PLN.dgn*, received 1-15-09 from Parsons Brinckerhoff.
3. Existing footings are based on Parsons Brinckerhoff files *160073U00ALLUEF000.dwg*, received 6-11-07; *GIS_EX_VIADUCT.dgn*, received 4-9-08; and *160073CSBS00SD200.MST*, received 5-27-08.

DRAFT

Alaskan Way Viaduct and Seawall Program
Bored Tunnel Project
Seattle, Washington

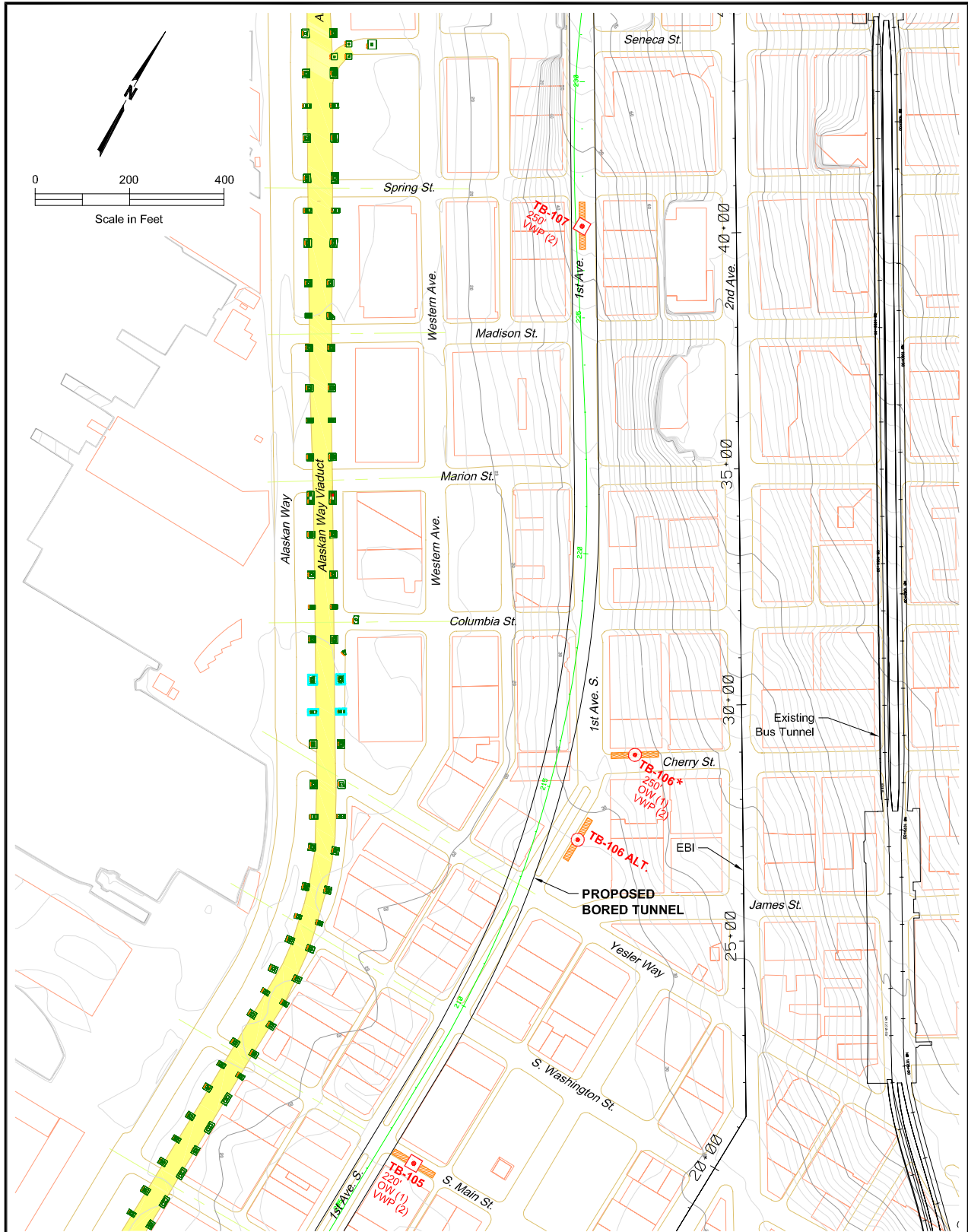
PROPOSED EXPLORATION PLAN

February 2009 21-1-20840-010

SHANNON & WILSON, INC.
Geotechnical and Environmental Consultants

FIG. 1
Sheet 2 of 6

FIG. 1
Sheet 2 of 6



PROJECT EXPLORATIONS AND LEGEND

- TB-100** Proposed Soil Boring and Designation
- TB-103** Proposed Sonic Core Boring and Designation
- Proposed Boring Work Zone
- ALT.** Alternative Proposed Boring
- Proposed Shear Wave Velocity Testing
- Proposed Depth of Boring
- Proposed Observation Well and Quantity
- Proposed Vibrating Wire Piezometer and Quantity

DRAFT

NOTES

1. Base map is adapted from City of Seattle GIS data files *topo_all.dwg*, *st_names.dwg*, and *paveedge.dwg*, received 3-11-02; City of Seattle GIS data file *buildings.dwg*, received 3-6-02; and Parsons Brinckerhoff AutoCAD files *BSMP_SO.dwg*, received 11-30-01, and *rail.dwg*, received 5-15-03.
2. Bored tunnel, bus tunnel, and BNSF tunnel are based on file *SINGLE BORE W SOIL 121608 - PLN.dgn*, received 1-15-09 from Parsons Brinckerhoff.
3. Existing footings are based on Parsons Brinckerhoff files *160073U00ALLUEF000.dwg*, received 6-11-07; *GIS_EX_VIADUCT.dgn*, received 4-9-08; and *160073CSBS00SD200.MST*, received 5-27-08.

Alaskan Way Viaduct and Seawall Program
Bored Tunnel Project
Seattle, Washington

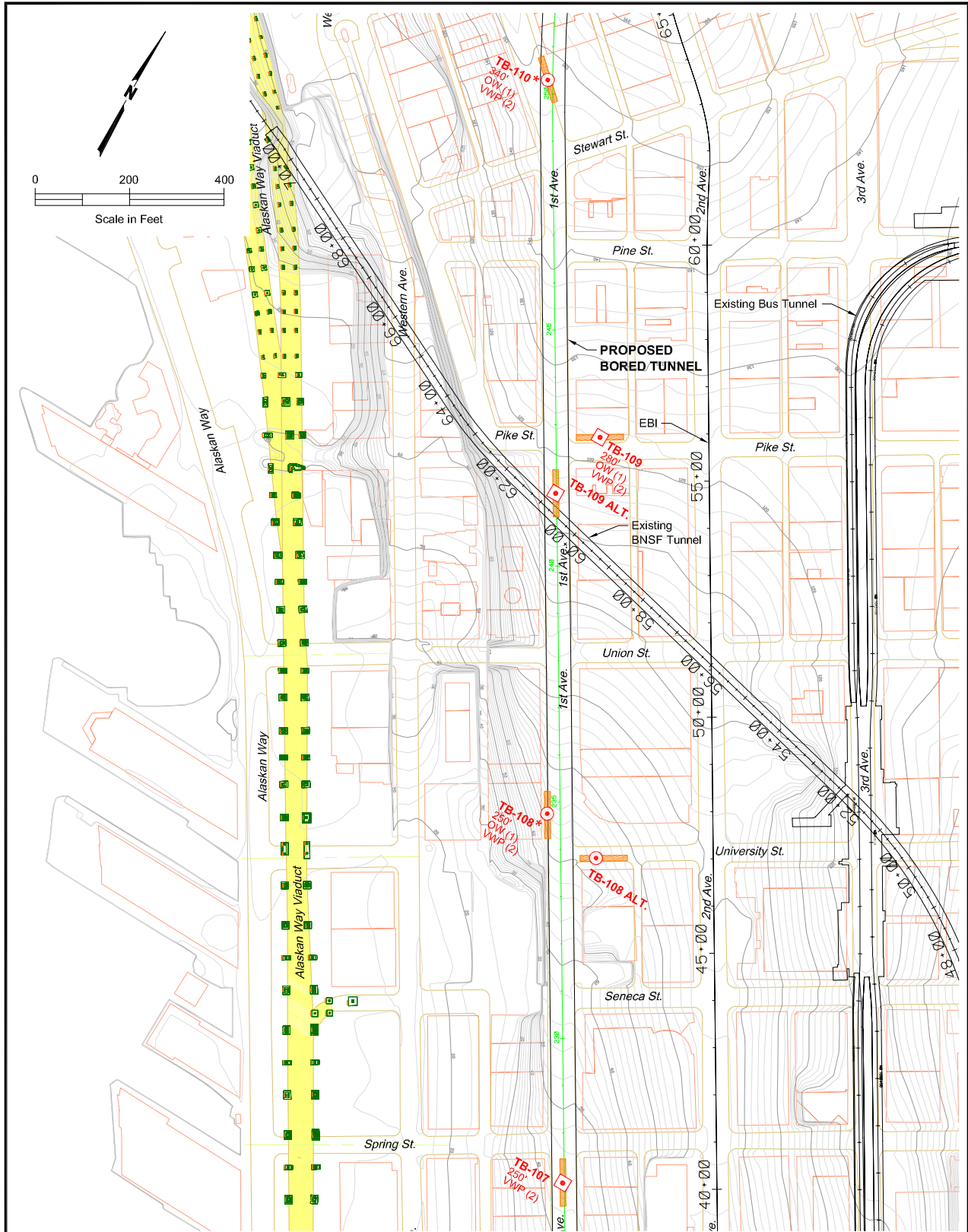
PROPOSED EXPLORATION PLAN

February 2009

21-1-20840-010

SHANNON & WILSON, INC.
Geotechnical and Environmental Consultants

FIG. 1
Sheet 3 of 6



PROJECT EXPLORATIONS AND LEGEND

- TB-100** Proposed Soil Boring and Designation
- TB-103** Proposed Sonic Core Boring and Designation
- Proposed Boring Work Zone
- ALT.** Alternative Proposed Boring
- Proposed Shear Wave Velocity Testing
- Proposed Depth of Boring
- Proposed Observation Well and Quantity
- Proposed Vibrating Wire Piezometer and Quantity

NOTES

1. Base map is adapted from City of Seattle GIS data files *topo_all.dwg*, *st_names.dwg*, and *pavedge.dwg*, received 3-11-02; City of Seattle GIS data file *buildings.dwg*, received 3-6-02; and Parsons Brinckerhoff AutoCAD files *BSMP_SO.dwg*, received 11-30-01, and *rail.dwg*, received 5-15-03.
2. Bored tunnel, bus tunnel, and BNSF tunnel are based on file *SINGLE BORE W SOIL 121608 - PLN.dgn*, received 1-15-09 from Parsons Brinckerhoff.
3. Existing footings are based on Parsons Brinckerhoff files *160073U00ALLUEF000.dwg*, received 6-11-07; *GIS_EX_VIADUCT.dgn*, received 4-9-08; and *160073CSBS00SD200.MST*, received 5-27-08.

DRAFT

Alaskan Way Viaduct and Seawall Program
Bored Tunnel Project
Seattle, Washington

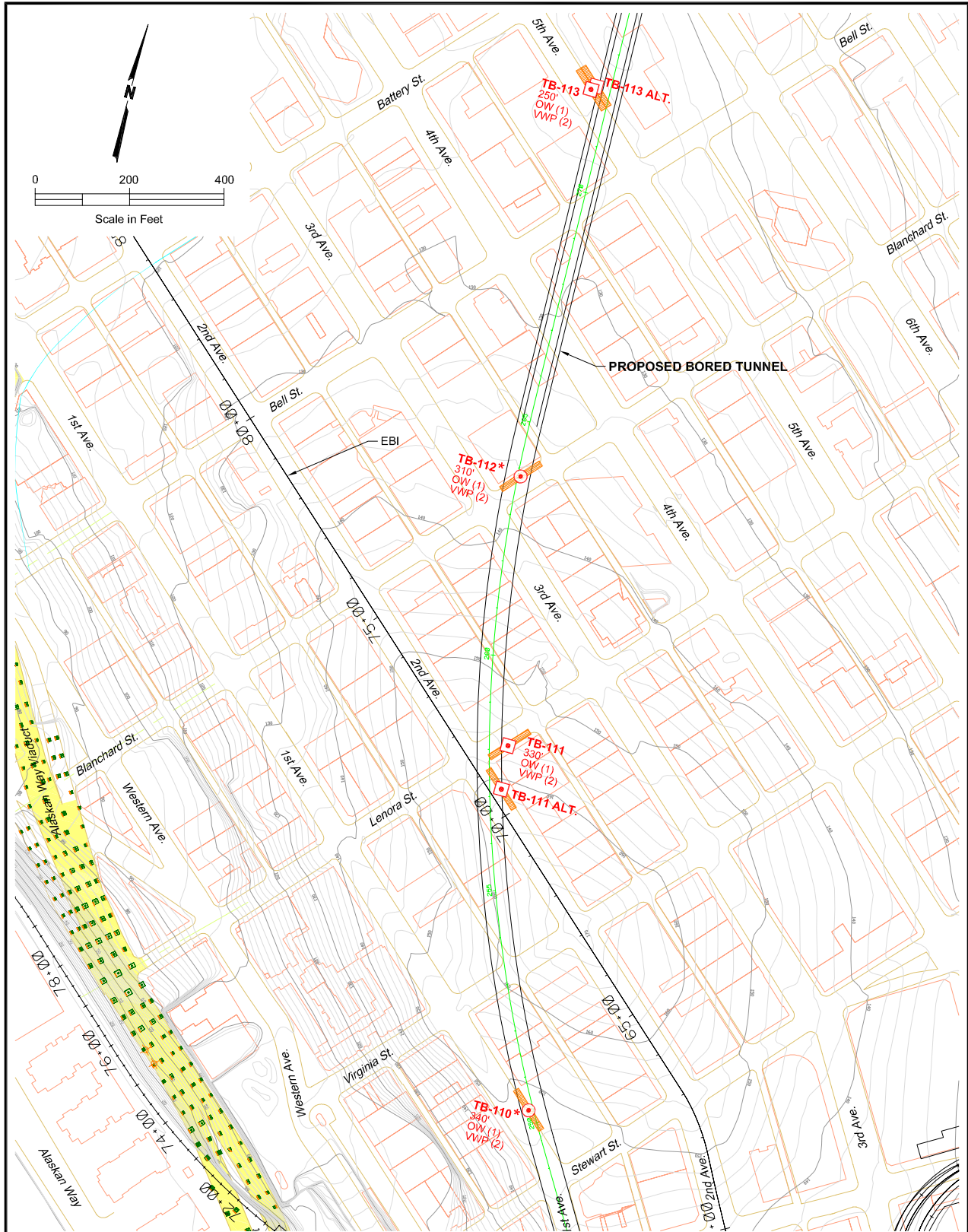
PROPOSED EXPLORATION PLAN

February 2009

21-1-20840-010

SHANNON & WILSON, INC.
Geotechnical and Environmental Consultants

FIG. 1
Sheet 4 of 6



PROJECT EXPLORATIONS AND LEGEND

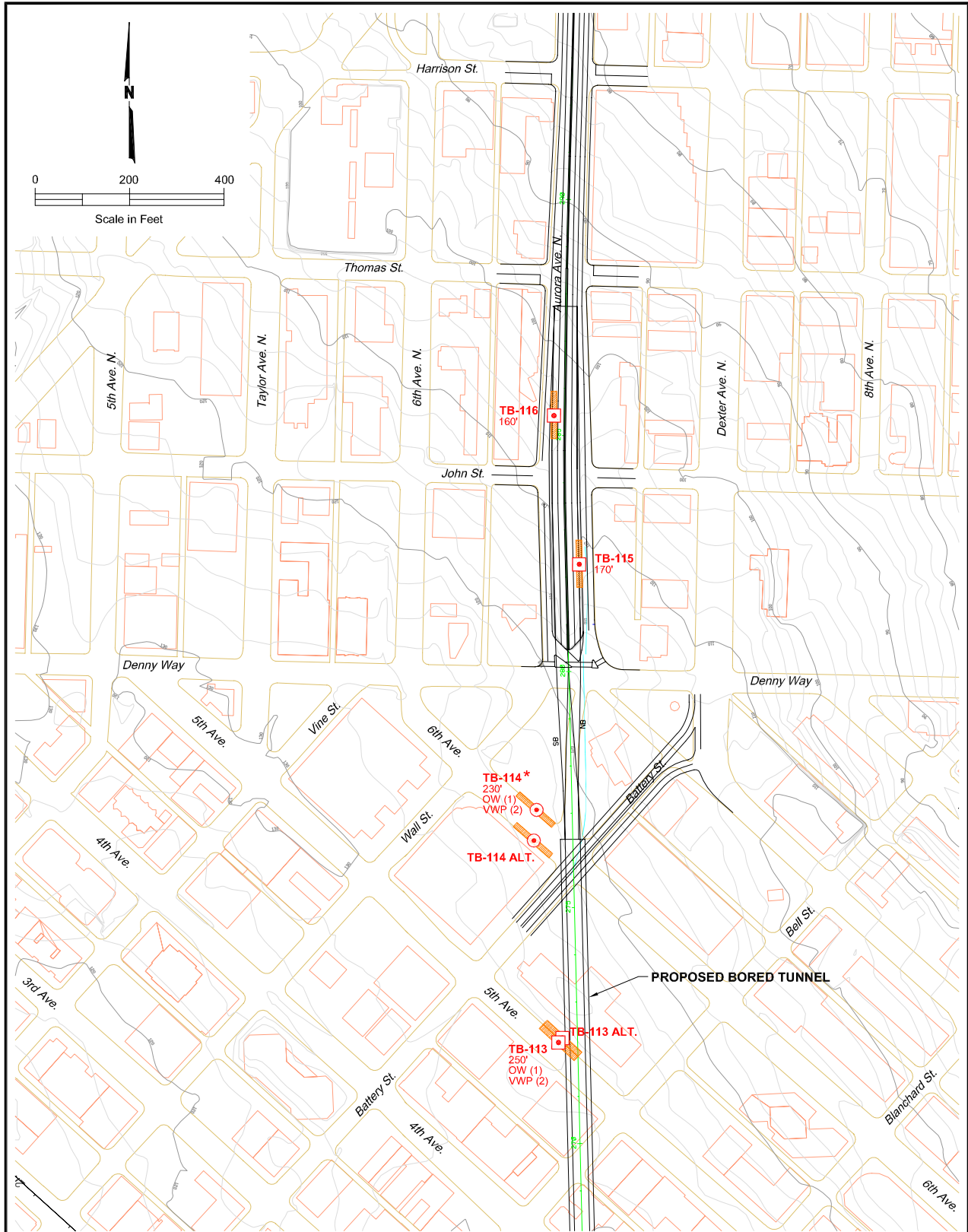
- TB-100 Proposed Soil Boring and Designation
- TB-103 Proposed Sonic Core Boring and Designation
- Proposed Boring Work Zone
- ALT. Alternative Proposed Boring
- * Proposed Shear Wave Velocity Testing
- Proposed Depth of Boring
- 100' Proposed Observation Well and Quantity
- OW (1) Proposed Observation Well and Quantity
- VWP (1) Proposed Vibrating Wire Piezometer and Quantity

DRAFT

NOTES

1. Base map is adapted from City of Seattle GIS data files *topo_all.dwg*, *st_names.dwg*, and *pavedge.dwg*, received 3-11-02; City of Seattle GIS data file *buildings.dwg*, received 3-6-02; and Parsons Brinckerhoff AutoCAD files *BSMP_SO.dwg*, received 11-30-01, and *rail.dwg*, received 5-15-03.
2. Bored tunnel, bus tunnel, and BNSF tunnel are based on file *SINGLE BORE W SOIL 121608 - PLN.dgn*, received 1-15-09 from Parsons Brinckerhoff.
3. Existing footings are based on Parsons Brinckerhoff files *160073U00ALLUEF000.dwg*, received 6-11-07; *GIS_EX_VIADUCT.dgn*, received 4-9-08; and *160073CSBS00SD200.MST*, received 5-27-08.

Alaskan Way Viaduct and Seawall Program Bored Tunnel Project Seattle, Washington	
PROPOSED EXPLORATION PLAN	
February 2009	21-1-20840-010
SHANNON & WILSON, INC. <small>Geotechnical and Environmental Consultants</small>	FIG. 1 <small>Sheet 5 of 6</small>



PROJECT EXPLORATIONS AND LEGEND

- | | | | |
|---------------|--|--|---|
| TB-100 | Proposed Soil Boring and Designation | | Proposed Depth of Boring |
| TB-103 | Proposed Sonic Core Boring and Designation | | Proposed Observation Well and Quantity |
| | Proposed Boring Work Zone | | Proposed Vibrating Wire Piezometer and Quantity |
| ALT. | Alternative Proposed Boring | | |
| * | Proposed Shear Wave Velocity Testing | | |

DRAFT

NOTES

- Base map is adapted from City of Seattle GIS data files *topo_all.dwg*, *st_names.dwg*, and *paveedge.dwg*, received 3-11-02; City of Seattle GIS data file *buildings.dwg*, received 3-6-02; and Parsons Brinckerhoff AutoCAD files *BSMP_SO.dwg*, received 11-30-01, and *rail.dwg*, received 5-15-03.
- Bored tunnel, bus tunnel, and BNSF tunnel are based on file *SINGLE BORE W SOIL 121608 - PLN.dgn*, received 1-15-09 from Parsons Brinckerhoff.
- Existing footings are based on Parsons Brinckerhoff files *160073U00ALLUEF000.dwg*, received 6-11-07; *GIS_EX_VIADUCT.dgn*, received 4-9-08; and *160073CSBS00SD200.MST*, received 5-27-08.

Alaskan Way Viaduct and Seawall Program
Bored Tunnel Project
Seattle, Washington

PROPOSED EXPLORATION PLAN

February 2009

21-1-20840-010

SHANNON & WILSON, INC.
Geotechnical and Environmental Consultants

FIG. 1
Sheet 6 of 6